



7 Colors | 1 Size | 1 Finish

FLAUTINI
DIMENSIONAL WALL TILE

NEMO
TILE + STONE

FLAUTINI

Born from the architectural spirit of our signature Flauti series, Flautini represents the next chapter in dimensional wall design. This refined 1"×8" (2.5x20cm) format reimagines the sculptural rhythm of Flauti at a smaller scale. Introducing a new level of precision, intimacy, and creative versatility. The result is a tile that transforms surface into statement, celebrating light, shadow, and texture with modern elegance.

Flautini's glossy glaze and contemporary palette, ranging from soft neutrals to rich, moody hues, reflect the color-forward design trends shaping today's interiors. Each tone evokes depth and emotion, creating walls that feel both architectural and atmospheric.

Thanks to its glazed porcelain stoneware body with low water absorption, Flautini ensures high technical performance and durability. Ideal for interior and exterior wall coverings, architectural façades, and high-traffic spaces across residential, retail, and hospitality environments, it balances beauty with exceptional resilience.





Why We Love It

- **Design evolution:** A sophisticated continuation of Flauti, refined in scale and crafted for modern design applications.
- **Dimensional artistry:** Sculpted profile brings light, movement, and texture to interior environments.
- **Versatile composition:** Perfectly suited for hospitality, retail, and residential spaces seeking expressive wall design with timeless appeal.
- **Trend-forward palette:** A range of luminous hues with the moody depth designers are embracing.
- **Enduring performance:** Glazed porcelain body with low water absorption ensures lasting quality in both interior and exterior settings.



COTTO



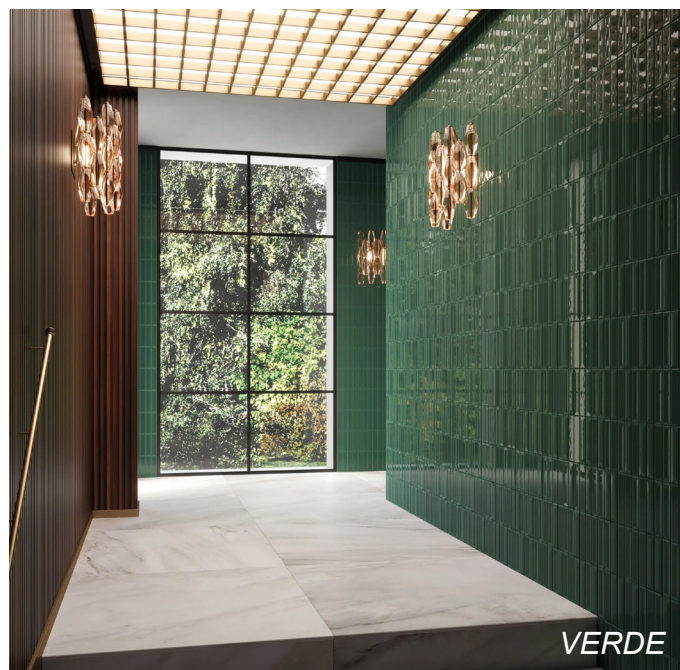
BIANCO



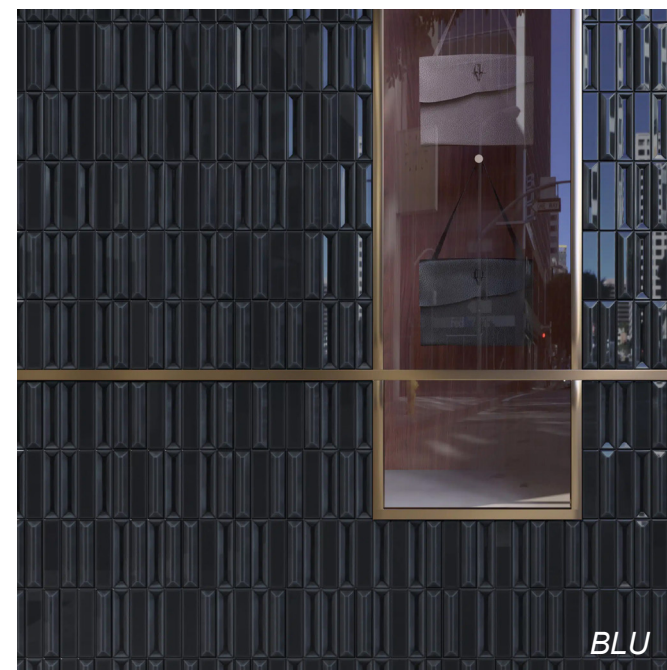
VINO



VINO



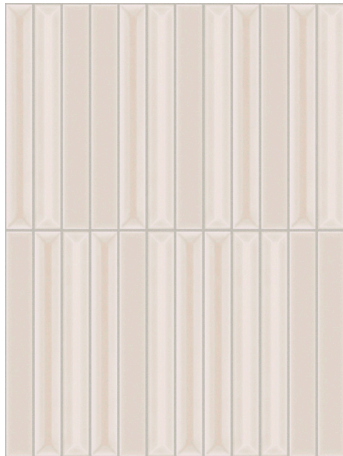
VERDE



BLU

COLORS

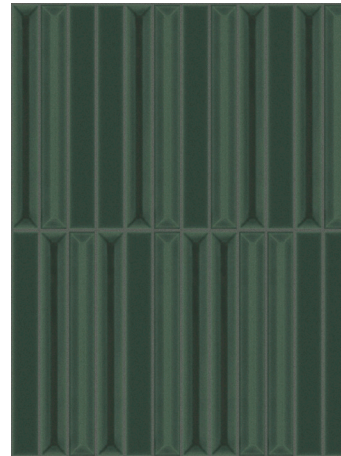
Flautini is available in 7 colors in a structured glossy finish. Suitable for wall applications. Flautini is available for special order only.



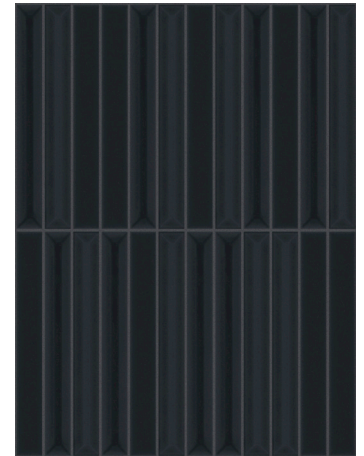
Bianco



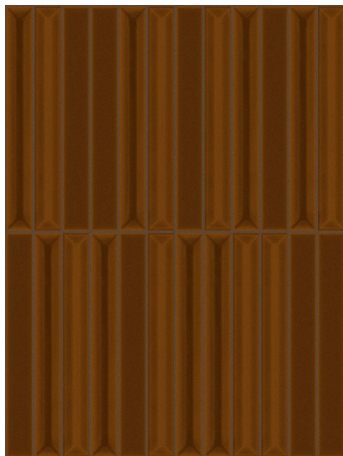
Grigio



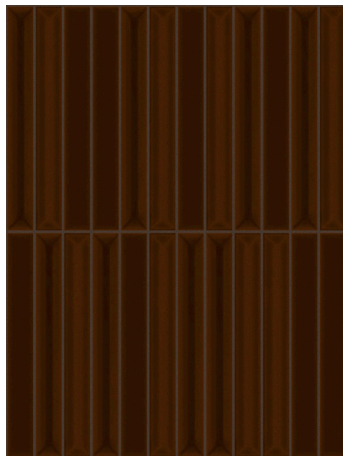
Verde



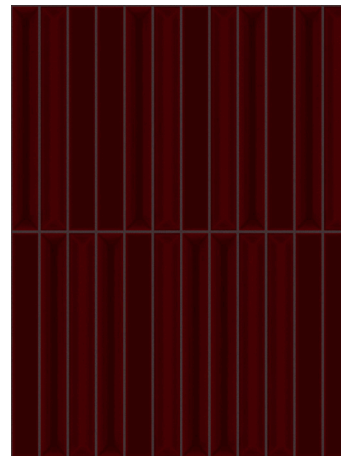
Blu



Cotto

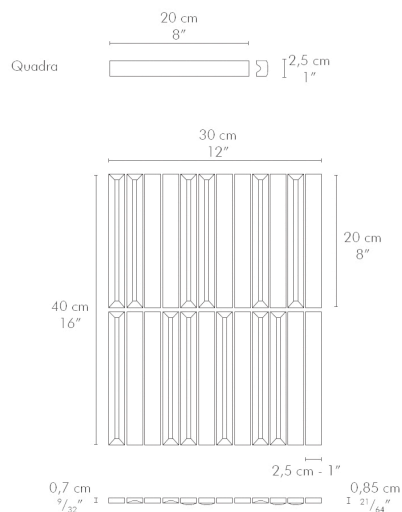


Tabacco



Vino

Sizes



Montato su rete in fibra di vetro
Mesh mounted on fibreglass net

RANDOM MIXED

5x20 cm	lati sides	48,1x198,4 mm	EN ISO 10545-2	lati sides	± 0,6%
	spessore thickness	8,5 mm		spessore thickness	±5%
	Rettinità dei lati (superficie di esercizio) Straightness of sides (working surface)		EN ISO 10545-2		± 0,5%
	Ortogonalità Squareness		EN ISO 10545-2		± 0,5%
	Planarità della superficie Flatness		EN ISO 10545-2		± 0,5%
	Qualità della superficie Surface quality		EN ISO 10545-2		min. 95%

Sustainability



LEED CREDITS

Products with this designation may help building projects earn LEED® certification points for environmental responsibility.



EPD AVAILABLE

An EPD transparently details its environmental impact across its life cycle, from raw material extraction to manufacturing, use, and end-of-life.



ZERO VOC

Zero VOC indicates that no volatile organic compounds are present, contributing to healthier indoor environments.

Technical Information

Massa d'acqua assorbita (%) Water absorption (%)	EN ISO 10545-3	0,5% < E _b ≤ 3,0 %	0,5% < E _b ≤ 3,0 %	Resistenza dei colori alla luce Colour resistance to light	DIN 51094	non previsto not foreseen	garantita guaranteed
Resistenza di rottura Tensile strength	EN ISO 10545-4	1.100 N min.	1.100 N min.	Reazione al fuoco Reaction to the fire	senza prova without test	decisione 96/603/CE decision 96/603/CE	classe A1
Modulo di rottura Modulus of rupture	EN ISO 10545-4	30 N/mm2 min.	30 N/mm2 min.	Resistenza alle macchie Stain resistance	EN ISO 10545-14	classe 3 min.	3 min. (vedi appendice P catalogo generale) (see P appendix general catalogue)
Coefficiente di dilatazione termica lineare Coefficient of linear thermal expansion	EN ISO 10545-8	metodo di prova disponibile test method available	< 6,9x10 ⁻⁶ /°C	Resistenza ai prodotti chimici d'uso domestico ed agli additivi per piscina Resistance to chemical products for housekeeping and to the additives used in swimming-pools	EN ISO 10545-13	GB min.	GB min.
Resistenza agli sbalzi termici Thermal shock resistance	EN ISO 10545-9	metodo di prova disponibile test method available	garantita guaranteed	Resistenza ad acidi e basi a bassa concentrazione Resistance to acids and bases at low concentrations	EN ISO 10545-13	indicata dal produttore indicated by the producer	GLB min.
Resistenza al cavillo Crazing resistance	EN ISO 10545-11	richiesta required	garantita guaranteed	Resistenza ad acidi e basi ad alta concentrazione Resistance to acids and bases at high concentrations	EN ISO 10545-13	metodo di prova disponibile test method available	GHB min.
Resistenza al gelo Frost resistance	EN ISO 10545-12	metodo di prova disponibile test method available	garantita guaranteed	Cessione di piombo e cadmio Lead and cadmium losses	EN ISO 10545-15	metodo di prova disponibile test method available	disponibile a richiesta available if required
Dilatazione dovuta all'umidità Expansion to humidity	EN ISO 10545-10	metodo di prova disponibile test method available	< 0,04%				
Resistenza all'urto Impact resistance	EN ISO 10545-5	metodo di prova disponibile test method available	> 0,6 (vedi appendice P catalogo generale) (see P appendix general catalogue)				