



15 Colors | 1 Size | 1 Finish

DINTORNI

NEMO
TILE + STONE

X

MUTINA

DINTORNI

Dintorni is the new collection by Inga Sempé, designed around the iconic 8"x8" format. It explores the infinite possibilities of ceramics, drawing on ceramic traditions and reinterpreting them in a contemporary lens. The collection features two variations, the patterns and Isola. In addition, there are two versatile elements that can be paired with the others or used individually (the solid colors and Raccordo).

The first family consists of three different geometric patterns whose color combinations create delicate optical effects. Scala is an interlocking arrangement of steps, Bandiere is a sequence of small triangles, and Dana is a ceramic interpretation of a chessboard, made dynamic by the alternating presence of small dots. Depending on the colors, the elements are defined as Neve, Sole, or Ombra. Each pattern can be combined only with its own chromatic or geometric variant (e.g. Scala Neve + Scala Ombra, or Scala + Bandiere Neve), as well as with the solid colors, which can be used in tone or in contrast.

The second family, Isola represents a dreamlike world where Sempé gives free rein to her imagination. The ten metaphysical depictions (sold exclusively together) create a distant place—both an escape and a refuge—a break from geometry and the grid.

The collection is completed by Raccordo, a highly distinctive glossy ceramic profile available in Nero and Caramel. This element has multiple functions: when placed in one direction, it serves as a transition between flooring and wall covering; when rotated, it can be used as a finishing edge for a boiserie or simply as a small shelf.





THE INSPIRATION

“In creating Dintorni, I wanted to surprise myself. I set out to represent worlds that have no connection to each other except for their very estrangement. My goal was to explore the edges of what I know and give shape to what I had yet to discover. Because at any moment, you can see something new—something different from what you’ve seen before.

Isola is dream, imagination, and freedom. It is what lies beyond—the place you would go to if you could escape.”

- INGA SEMPÉ

Designer of Dintorni, artist and designer

NEMO
TILE + STONE

×

MUTINA

Dintorni
Industrial Square Tile



COLORS

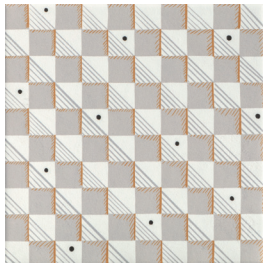
Dintorni is available in 9 geometric pattern variations, 5 solid color options, and Isola, a mixed decorative tile that comes with 10 different faces. Additionally, Dintorni is comes with 2 special pieces. The 15 color options all are offered in an 8”x8” format in a soft matte finish. All 8”x8” square tile options are available in stock.



Scala Neve



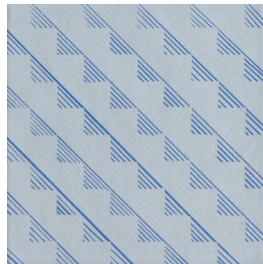
Bandiere Neve



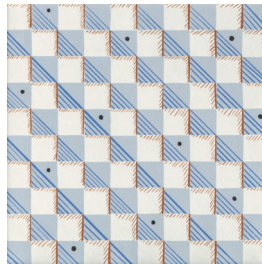
Dama Neve



Scala Sole



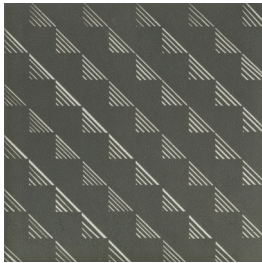
Bandiere Sole



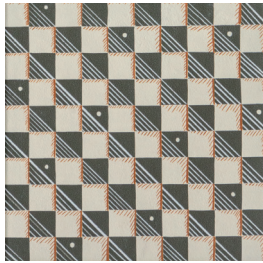
Dama Sole



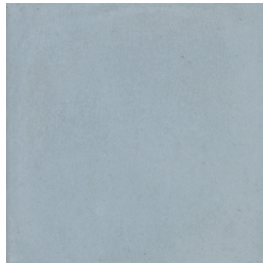
Scala Ombra



Bandiere Ombra



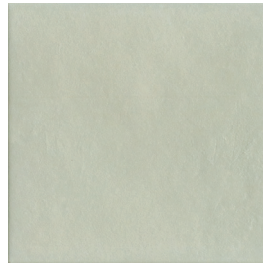
Dama Ombra



Azzurro



Terracotta



Verde Chiaro



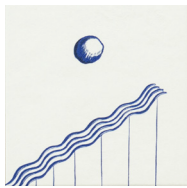
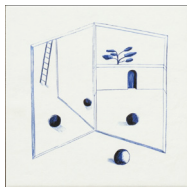
Verde Scuro



Blu

ISOLA

One carton of Isola comes with a mix of the 10 design options shown here:



TECHNICAL INFORMATION

General information

production	Industrial
material	Glazed and not rectified porcelain stoneware
thickness	9,5 mm
special pieces	Raccordo Ceramic profile in glazed extruded body, with a glossy finish.
category	UNI EN 14411 App G (Bla group) GL

Laying and maintenance tips

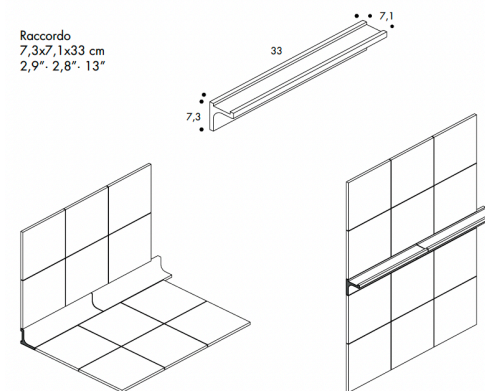
use	Floor, wall – indoor, outdoor.
installation	For an even, smooth shading effect when laying, alternate material from several different boxes
recommended adhesive	Adhesive for porcelain stoneware
recommended joints	2 mm
recommended fillers	cement-based grout / epoxy grout for polished versions (cove base/shelf), a fine-grain grout must always be used. Download the Grout Tables.
cleaning at the end of installation	CEMENT-BASED GROUT: Buffered acid (e.g. DETERDEK PRO by FILA or similar). Wet the floor with water, saturating the joints, and dilute the product 1:5 with water and pour it on the floor. Wait for 2-3 minutes then use a white scotch Brite pad and rinse well with clean water. EPOXY GROUT: Alkaline detergent (e.g. FILA CR10 by FILA). FILA CR10: apply pure, wait for 30 minutes then use a green scotch Brite pad. SILICONE: Solvent for silicone e.g. FILA ZERO SIL. Put it straight onto the stain, wait for 20 minutes and remove the mark using scotch Brite. PAINT: Can usually be removed using water, but if resin-based paints or particular enamels have been used, it is best to ask the manufacturer which solvent is most suitable. RUST: stain remover es. FILA NO RUST. Apply the product onto the stain, leave for 15 minutes, remove the residue and rinse thoroughly. POLISHED VERSIONS: For cleaning at the end of the work, and for ordinary cleaning, we recommend limiting the use of abrasive cleaning instruments (such as iron sponges or steel scrubbing pads) as far as possible. This indication must be strictly complied with for tiles with a polished surface, because they are more vulnerable to scratching, dulling, etc.
general cleaning (installed tiles)	You are recommended to use specific detergent for porcelain stoneware diluted in water.
calibers (real size)	cal 1 : from 203,6x203,6x9,5mm to 205x205x9,5mm cal 0 : from 202,1x202,1x9,5mm to 203,5x203,5x9,5mm (calibers depend on the production lot, we recommend to ask in advance)



20,5-20,5 cm
8"-8"

special pieces

Raccordo
7,3x7,1x33 cm
2,9"- 2,8"- 13"



The element has multiple functions: if used in one direction it acts as a connection between the floor and the covering, while rotated in the other it can be used as a closure for a boiserie, or simply generate a space to be used as a small shelf.



TECHNICAL INFORMATION

STANDARD	FEATURES	VALUE REQUIRED	DINTORNI
ISO 10545/3	water absorption	< 0,5%	0,07%
ISO 10545/4	breaking strength	≥ 1300 N	in conformity with standard
	modulus of rupture	≥ 32 N/mm2	
ISO 10545/9	resistance to thermal shock	no visible alteration	resistant
ISO 10545/12	frost resistance	no visible alteration	resistant
ISO 10545/13	resistance to acids and alkalis (low and high concentration)	declared value	A
	resistance to household cleaning agents and swimming pool chemicals	minimum class B	A
ISO 10545/14	stains resistance	minimum class 3	5
DIN 51130			R11
DIN 51097			C
DCOF		> 0,42	0,74
Pendulum BS (EN 16165-c)			55 dry 45 wet
Pendulum AS/NZS (4586313 app A)			44 P3
LEED CERTIFICATION 4.1			20% recycled materials
VOC Emission			available upon request
EPD			available upon request
Declaration of Contents			available upon request
SVHC declaration			available upon request



V2
minimum variation