

4 Colors | 1 Size | 1 Finish | 3 Patterns

# AURORE

**NEMO**  
TILE + STONE

×

MUTINA



# AUORE

Aurore is the new collection designed by Vincent Van Duysen, starting from the iconic 20x20 cm format. Inspired by children's chalk drawings on pavements, the collection is a nostalgic evocation of that simple and spontaneous form of creative expression, where each line is but a fleeting mark, exposed to the passage of time. Similarly, the grids that define the collection feature overlapping light and dark strokes, reminiscent of the traces left behind by those ephemeral chalk drawings.

Aurore is available in three variations: a solid colour, a wide-mesh grid (Grid L), and a narrow-mesh grid (Grid S). Each comes in four elegant and delicate shades: Light Blue, Light Green, Light Grey, and Charcoal. The elements of the collection can be freely combined, either tone-on-tone or in contrast, allowing for a mix of different colours or grids.





## THE INSPIRATION

---

“As far back as I can remember, I have always been drawn to the chalk drawings children create on the pavement. They convey an honest, spontaneous expression that elevates the space around them. These ‘imprints’ are fleeting, appearing differently at every moment before eventually disappearing altogether.

With Aurore, I hope to echo this slightly nostalgic sentiment. The background colour of the tiles seems to shift and fade over time, while delicate, refined lines overlay them with sensitivity. I find joy not only in observing them but also in combining them, allowing the tiles to inhabit and reveal their own spaces.”

**- VINCENT VAN DUYSSEN**

*Designer of Aurore, Belgian architect and designer*

**NEMO**  
TILE + STONE

× MUTINA

**Aurore**  
Industrial Square Tile





LIGHT GREEN + LIGHT GREEN GRID L



LIGHT GREY GRID S/L + CHARCOAL



LIGHT BLUE GRID L + CHARCOAL



LIGHT BLUE + LIGHT BLUE GRID S



LIGHT GREY GRID S/L + CHARCOAL

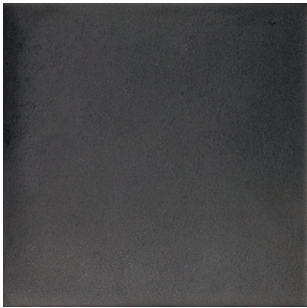


LIGHT GREEN + LIGHT GREEN GRID S + CHARCOAL

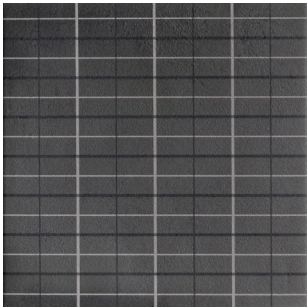
# COLORS

---

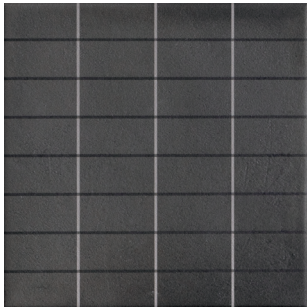
Aurore is available in three variations: a solid color, a wide-mesh grid (Grid L), and a narrow-mesh grid (Grid S). Each is available in Charcoal, Light Blue, Light Green, and Light Grey. Aurore is offered in an 8”x8” format in a soft matte finish. All 12 color options are available in stock.



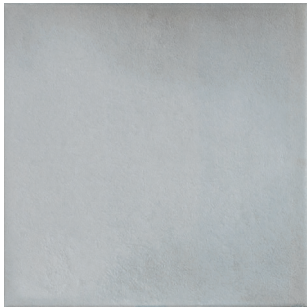
Charcoal



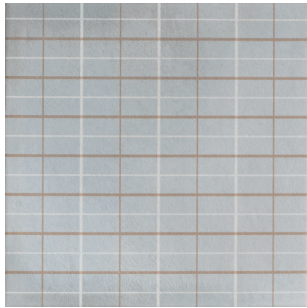
Charcoal Grid S



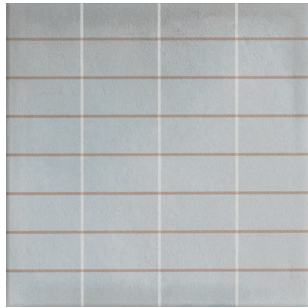
Charcoal Grid L



Light Blue



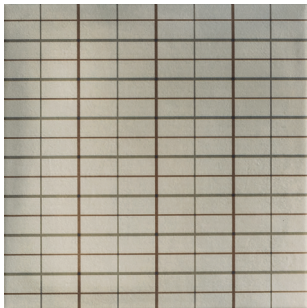
Light Blue Grid S



Light Blue Grid L



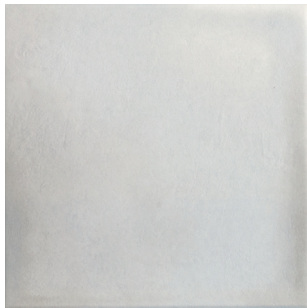
Light Green



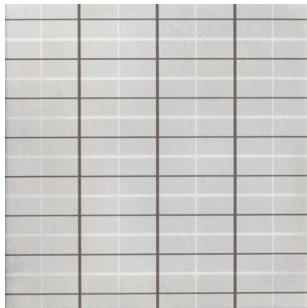
Light Green Grid S



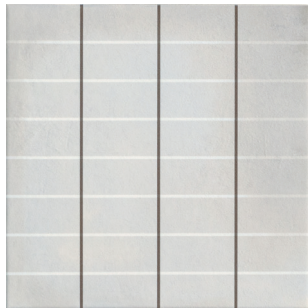
Light Green Grid L



Light Grey



Light Grey Grid S



Light Grey Grid L



# TECHNICAL INFORMATION

production	Industrial
material	Glazed and not rectified porcelain stoneware
thickness	9,5 mm
category	UNI EN 14411 App G (Bla group) GL

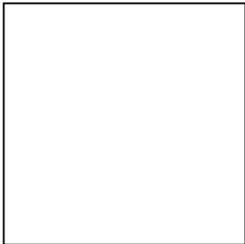
## Packing

SIZE	PCS-SQM	PCS-BOX	SQM-BOX	BOX-PAL	KG-BOX	KG-PAL	MQ-PAL
20,5-20,5 cm	23,88	16	0,67	48	13,47	646,56	32,16

## Laying and maintenance tips

use	Floor, wall – indoor, outdoor.
installation	For an even, smooth shading effect when laying, alternate material from several different boxes
recommended adhesive	Adhesive for porcelain stoneware
recommended joints	2 mm
recommended fillers	cement-based grout / epoxy grout <a href="#">Download the Grout Tables</a>
cleaning at the end of installation	CEMENT-BASED GROUT: Buffered acid (e.g. DETERDEK PRO by FILA or similar). Wet the floor with water, dilute the product 1:5 with water and pour it on the floor. Wait for 2-3 minutes then use a white scotch Brite pad and rinse well with clean water. EPOXY GROUT: Alkaline detergent (e.g. FILA CR10 by FILA). FILA CR10: apply pure, wait for 30 minutes then use a green scotch Brite pad. SILICONE: Solvent for silicone e.g. FILA ZERO SIL. Put it straight onto the stain, wait for 20 minutes and remove the mark using scotch Brite. PAINT: Can usually be removed using water, but if resin-based paints or particular enamels have been used, it is best to ask the manufacturer which solvent is most suitable. RUST: stain remover es. FILA NO RUST. Apply the product onto the stain, leave for 15 minutes, remove the residue and rinse thoroughly.
general cleaning (installed tiles)	You are recommended to use specific detergent for porcelain stoneware diluted in water.
calibers (real size)	cal 1 : from 203,6x203,6x9,5mm to 205x205x9,5mm cal 0 : from 202,1x202,1x9,5mm to 203,5x203,5x9,5mm  (calibers depend on the production lot, we recommend to ask in advance)

## Nominal sizes



20,5-20,5 cm  
8".8"

# TECHNICAL INFORMATION

STANDARD	FEATURES	VALUE REQUIRED	AUORE
ISO 10545/3	water absorption	< 0,5%	0,07%
ISO 10545/4	breaking strength	≥ 1300 N	in conformity with standard
	modulus of rupture	≥ 32 N/mm2	
ISO 10545/9	resistance to thermal shock	no visible alteration	resistant
ISO 10545/12	frost resistance	no visible alteration	resistant
ISO 10545/13	resistance to acids and alkalis (low and high concentration)	declared value	A
	resistance to household cleaning agents and swimming pool chemicals	minimum class B	A
ISO 10545/14	stains resistance	minimum class 3	5
DIN 51130			R11
DIN 51097			C
DCOF		> 0,42	0,74
Pendulum BS (EN 16165-c)			55 dry 45 wet
Pendulum AS/NZS (4586313 app A)			44 P3
LEED CERTIFICATION 4.1			20% recycled materials
VOC Emission			available upon request
EPD			available upon request
Declaration of Contents			available upon request
SVHC declaration			available upon request



V2  
minimum variation