

4 Colors | 4 Sizes | 2 Mosaics | 1 Finish

**LAB**  
CONCRETE PORCELAIN

**NEMO**  
TILE + STONE



# LAB

Lab brings the raw elegance of concrete into your space, reimagined in durable porcelain tiles. Inspired by the sleek lines and industrial charm of contemporary architecture, Lab embodies modernity, sophistication, and practicality. It's the perfect choice for those seeking to blend minimalist design with the rugged beauty of industrial aesthetics.

Offered in 4 versatile shades that capture the essence of concrete — a light white-gray for airy, open spaces, two neutral grays for timeless versatility, and a deep black for bold, dramatic statements.

Available in a full range of formats to suit any design vision with 12x24 and 24x48 field tiles, 2 mosaic styles, a chevron piece, a unique relief piece, and trim pieces for a seamless completed look.

Perfect for residential and commercial settings alike, whether you're creating a loft-inspired living room, refining an industrial workspace, or designing a contemporary bathroom, Lab adapts effortlessly to your vision. With clean lines and understated elegance, Lab reflects the modernity and sophistication of contemporary design.







WHITE



ASH



CLAY



CLAY



WHITE | CLAY



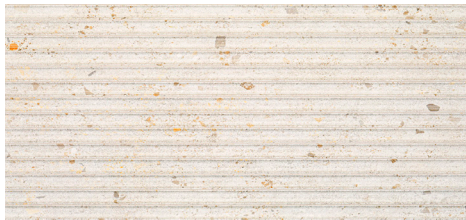
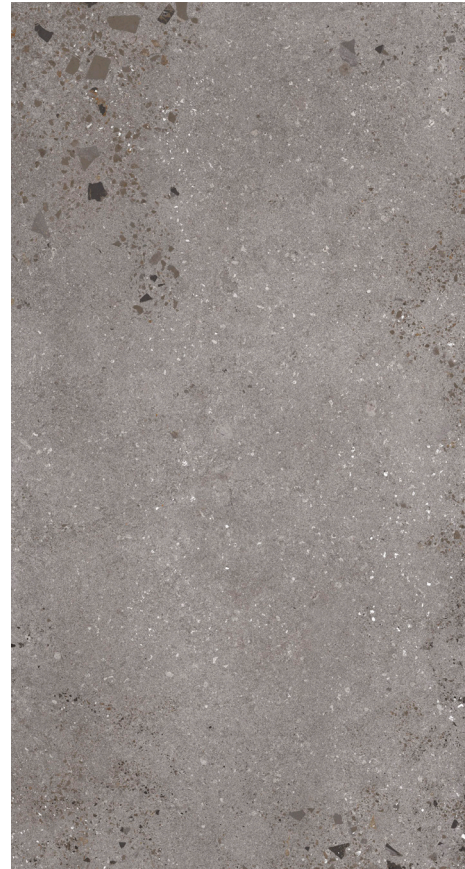
ASH



# COLORS

Lab is available in 4 colors in a natural finish

*V4 Variation*



White

Ash

Clay

Coal



## Sizes



**24x48**  
8.5mm Thickness



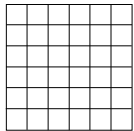
**12x24**  
8mm Thickness



**18x48 Relief- Wall Only**  
13.3mm Thickness



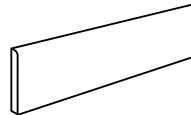
**2.5x15 Chevron**  
8mm Thickness



**2x2 Square Mosaic**  
8mm Thickness, on 12x12 sheet



**1x6 Stripe Mosaic**  
8mm Thickness, on 12x12 sheet



**3x12 Bullnose**

## Technical Information

<b>Material</b>	Porcelain	<b>Application</b>	Facade, light commercial, and residential use
<b>Finish</b>	Natural	<b>Frost Resistance</b>	Resistant
<b>Shade Variation</b>	V4	<b>Water Absorption</b>	≤ 0.5%
<b>Stain Resistance</b>	Class A	<b>Chemical Resistance</b>	Class A
<b>DCOF</b>	≥0.6	<b>Edge</b>	Rectified
<b>Breaking Strength</b>	≥275 lbf	<b>Scratch Hardness</b>	8 MOHS

